

ALTARO OFFICE 365 BACKUP

Why do I need to back up my company's Office 365 mailboxes and files in OneDrive and SharePoint?



Microsoft does not provide Office 365 backup and recovery services



Microsoft can't help with unexpected data loss or damage



Problems with non-centralized data



Microsoft does not provide Office 365 backup and recovery services

Office 365 subscriber data – such as mailboxes and files stored within OneDrive and SharePoint Document Libraries - is not backed up by Microsoft as part of their subscription. Microsoft does not provide Office 365 data protection services. ([Read more here.](#))

- Microsoft provides the necessary infrastructure and must ensure that Office 365 works. However, as an Office 365 subscriber, it is up to you to protect your Office 365 data from aspects such as: human error (for example, deleted items), hacker and malware attacks, malicious user actions, etc.
- Microsoft doesn't provide native backup options for Office 365. It includes some basic archiving, retention and recovery features as well as versioning, but cannot guarantee full and fast restoration of data loss.

That's why you need to use a reliable backup and recovery solution to save your skin when things go wrong and to give you peace of mind.

Microsoft can't help with unexpected data loss or damage

If Office 365 contents are misplaced or deleted from the network or are damaged or destroyed, a robust backup solution ensures that you have access to a backed-up copy. This helps you avoid the issues and repercussions that arise when data goes missing.

Once a mail item is deleted or changed in Office 365, for example, it stays that way. Simple day-to-day scenarios could lead to data loss, such as:

- A system admin might unintentionally delete an Office 365 mailbox user.
- A user might intentionally or accidentally delete a file within OneDrive or SharePoint and only realise weeks later.
- A ransomware attack or virus infection could block or damage an organisation's mailboxes.

A backup solution is therefore a must as it allows you to restore a prior instance of that item.

Problems with non-centralized data

Your data can best be protected and stored centrally by backing up all the company's mailboxes and files into a single location. This way, you can also enjoy easy access, searching, browsing and recovery. Altaro Office 365 Backup's online console enables central management and monitoring of all your Office 365 backups.

THE SOLUTION

It's essential for you to implement a reliable solution to back up your Office 365 mailboxes and your files in OneDrive and SharePoint Document Libraries.

Here's how Altaro can help you:

[Altaro Office 365 Backup](#) enables you to back up and restore all your Office 365 mailboxes – emails, attachments, contacts and calendars – and files stored within OneDrive and SharePoint through an online console, on an annual subscription, allowing you to easily manage your backups. Data is backed up to Altaro's Microsoft Azure infrastructure. Includes unlimited storage and 24/7 support. Altaro's 24/7 Lightning Fast Support Call Response Guarantee of under 30 seconds.

Benefits of the Altaro Office 365 Backup subscription program:



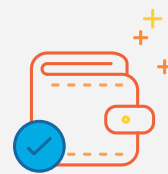
Back up your Office 365 mailboxes, OneDrive and SharePoint: Altaro enables you to back up and restore your Office 365 mailboxes with ease. If you wish to also back up your OneDrive and SharePoint accounts, you can choose to do so too.



Unlimited storage is included; no local storage infrastructure or software required: You don't have to think about setting up your own servers to save backups to – backups are saved to Altaro's Microsoft Azure infrastructure as part of the package.



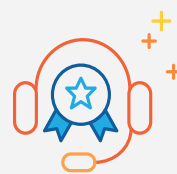
Central management and searches: Manage and monitor all your users' Office 365 backups – for mailboxes, OneDrive and SharePoint accounts – through Altaro's cloud-based management console. This also allows for easy searching.



No extra fees: You get access to all product features across all your users, unlimited backup storage on Microsoft Azure infrastructure, 24/7 support, and our console for centralised management.



Quick and easy recovery: Access various restore options to restore misplaced, deleted, damaged or destroyed items.



Lightning-fast, 24/7 support: 22-second average support call pickup, live chat, speak directly with an expert, no tier 1 agents or gatekeepers.



Unbeatable value: Great pricing. Volume discounts apply, making it even more cost-effective as you scale to tens of thousands of users.

Sign up for your 30-day trial
www.altaro.com/office-365

ALTARO

www.altaro.com | sales@altaro.com

Tel (UK). +44 (0) 203 397 6280

Tel (US). +1 (919) 251 6279

Tel (DE). +49 89 20802 6955



Microsoft Partner
Gold Application Development

Authorized Partner

nouveau.